



# LINAIR TECHNOLOGIES

OXYGEN & NITROGEN GENERATORS



## PRODUCT CATALOGUE

[www.linairtech.com](http://www.linairtech.com)

# CONTENTS

[ABOUT US](#)

---

[OXYGEN GENERATOR](#)

---

[NITROGEN GENERATOR](#)

---

[OXYGEN BOOSTER COMPRESSOR](#)

---

[NITROGEN BOOSTER COMPRESSOR](#)

---

[MEDICAL GAS EQUIPMENT](#)

---

[DESICCANT AIR DRYER](#)

---

[CONTACT](#)





## ABOUT US

LinAir Technologies builds Nitrogen and Oxygen Generators and complete production facilities with innovative technical solutions. With outstanding quality, competitive prices, just in time deliveries and excellent services.

We offer our products and services to the medical, industrial, oil&gas and defence sectors. In line with our quality principles, we constantly renew ourselves and follow technology and new developments closely. Quality is at the heart of our philosophy. A major technical expertise in on-site PSA systems and a strong experience ensure our clients to get the most reliable and safe solutions on market.

Innovation is our constant priority. Through a large investment in R&D and a close dialog with our clients, we are continuously improving our solutions and optimizing their performances and design.





## OXYGEN GENERATOR



Typical produced gas quality 1.2.1 according to ISO 8573-1:2010

**PURITY :**

LINAIR PSA oxygen generators, continuously 94%(+1) purity oxygen produces.

**GAS FLOW :**

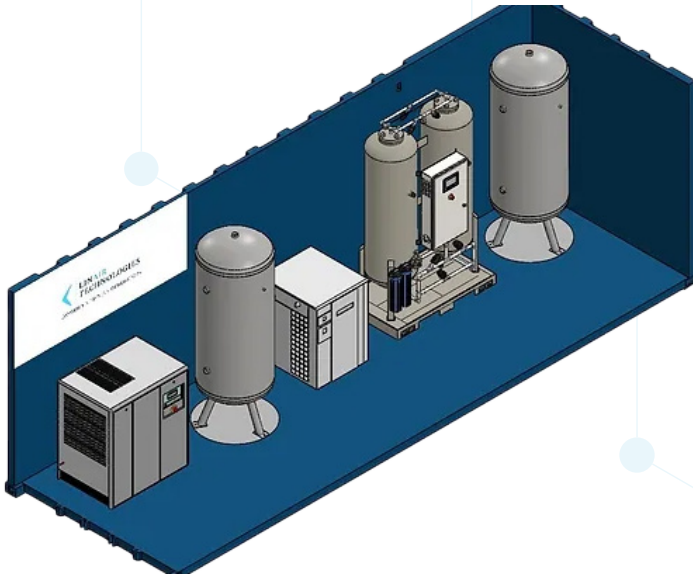
LINAIR TECHNOLOGIES manufactures oxygen generators with capacities from 3 Nm<sup>3</sup>/h to 250 Nm<sup>3</sup>/h.

**OUTLET PRESSURE :**

LINAIR Gas production systems can produce oxygen from 5 to 200 bar.

LINAIR PSA Medical & Industrial gas generator systems produce gas oxygen and nitrogen from compressed air from the field where they work, and substitutable to conventional gas source such as tubes or cryogenic liquid.

## OXYGEN GENERATOR



### CONTAINERIZED OXYGEN PLANT

LinAir has developed fully equipped medical oxygen auto-production systems on container and skid.

Those solutions are preassembled, wired, and tested ready for installation onsite (plug and play), without the any renovation in the health care facility building.

### AVAILABILITY ON REQUEST

- Built-in air conditioner.
- Additional electric heater. (For cold environments)
- Hot air exhaust line for compressor and air dryer.
- Fresh air vents
- Earth connection
- Internal electrical panel, piping and wiring.
- Easy to carry with lifting ears.

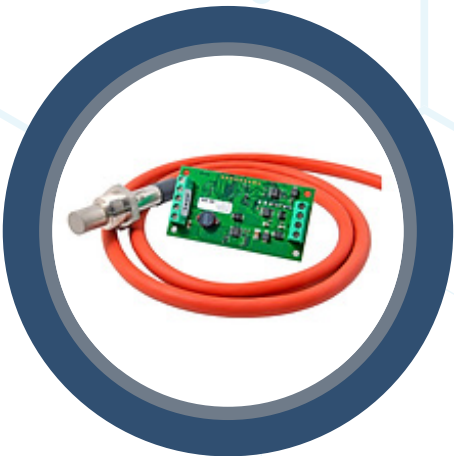




## OXYGEN GENERATOR



Completely stainless steel angle valves that can open and close 1,000,000. Angle valves are oil free.  
Included in stock model



With Zirconia sensor technology Possibility of measurement in the range of 0-100%. No need to change periodically, 5 years life time.  
Included in stock model

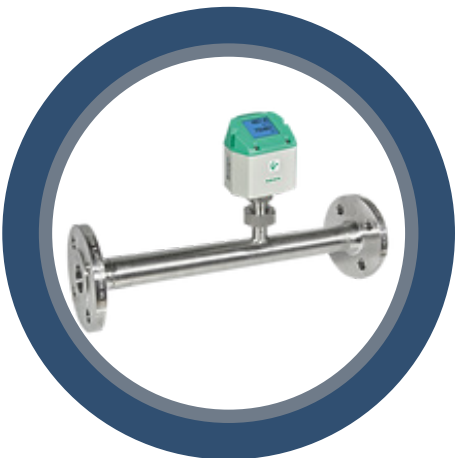


With the dewpoint analyzer, the inlet air quality is measured instantaneously, in case the dewpoint value is above +3C specified in ISO 8573 class 1.4.1, it is automatically evacuated in order not to damage the generator.  
Included in stock model

## OXYGEN GENERATOR



Includes 316 grade all-stainless steel fittings and tubing for medical and industrial applications.  
Included in stock model



Oxygen or nitrogen calibrated electronic flowmeter for gas production flow. Being able to be mounted on the gas line and accurately control the amount of gas produced. Output signal 4-20 Ma.  
Optional



Measurement of the quality of produced oxygen or nitrogen, and analysis of carbon dioxide and carbon monoxide values.  
Optional



## NITROGEN GENERATOR



The produced gas quality of these systems adheres to the standards outlined in ISO 8573-1:2010, specifically meeting the requirements of the 1.2.1 classification.

### **PURITY :**

Our PSA nitrogen generators produce nitrogen with purity between 95% and 99.999%, depending on your demand.

### **GAS FLOW :**

LINAIR TECHNOLOGIES produces nitrogen generators ranging in capacity from 1 Nm<sup>3</sup>/h to 1000 Nm<sup>3</sup>/h.

### **OUTLET PRESSURE :**

LINAIR nitrogen production systems are capable of generating nitrogen gas across a wide pressure range of 5 to 200 bar.



## NITROGEN GENERATOR



### NITROGEN DELIVERY REFERENCE CONDITIONS

Compressed air effective inlet pressure: 7.5 bar(g)/108 ps (g).

Nitrogen outlet pressure: 5 bar(g)/72 ps (g).

Ambient air temperature: 20°C/68°F.

Pressure dewpoint inlet air: 3°C/37°F.

Pressure dewpoint nitrogen: -50°C/-58°F.

Unit inlet air quality 1.4.1 according to ISO 8573-1:2010.

Minimum refrigerant dryer required to precondition inlet air.

Typical nitrogen quality 1.2.1 according to ISO 8573-1:2010.

### OPERATING LIMITS

Minimum ambient temperature: 5°C/41°F.

Maximum ambient temperature: 45°C/113°F.

Maximum compressed inlet air pressure 10 bar(g)/145 ps (g)



## NITROGEN GENERATOR



- Screw Air Compressor
- Refrigerant Air Dryer
- Air Tank
- Nitrogen Generator
- Nitrogen Tank

LINAIR PSA Medical & Industrial gas generator systems utilize a Pressure Swing Adsorption (PSA) process to produce oxygen and nitrogen gases from the compressed air available on-site.

## OXYGEN BOOSTER COMPRESSOR



- Engineered for safe, reliable delivery of clean, dry gases up to 150 barg.
- Suitable for high pressure oxygen.
- All gas contact parts are in stainless steel two three stage, single acting piston design in a compact package.
- Automatic high temperature stop.
- Automatic stop by pressure.
- Time counter.
- Compact, lightweight and easy to maintain
- Safety relief valve for each stage.
- Oil-Less crankshaft mechanism
- Oxygen cleaned to MIL-STD-I330D
- Long life cycle
- Oil-Free
- High reliability
- Continuous operation
- Automatic start and stop

### OXYGEN BOOSTER COMPRESSOR

| MODEL | CAPACITY Nm <sup>3</sup> /h | INLET PRESSURE (bar) | OPERATING PRESSURE MAX. (bar) | STAGE | POWER (kW) | DIMENSIONS (cm) |
|-------|-----------------------------|----------------------|-------------------------------|-------|------------|-----------------|
| LOB   | 5                           | 4                    | 150                           | 2     | 2,2        | 70x100x110      |
| LOB   | 10                          | 4                    | 150                           | 2     | 3          | 90x95x115       |
| LOB   | 20                          | 4                    | 150                           | 4     | 7,5        | 95x115x110      |
| LOB   | 30                          | 4                    | 150                           | 4     | 9          | 110x150x130     |
| LOB   | 40                          | 4                    | 150                           | 4     | 11         | 110x150x130     |
| LOB   | 50                          | 4                    | 150                           | 4     | 15         | 110x150x130     |
| LOB   | 60                          | 4                    | 150                           | 4     | 18,5       | 120x160x130     |



## NITROGEN BOOSTER COMPRESSOR



- ISO 9001 & CE Certificate
- Safe Usage
- Oil Free
- Runs with high purity nitrogen
- Quick Delivery
- Proper Price
- Strong After Sale Support

### TECHNICAL SPECIFICATIONS

- Engineered for safe, reliable delivery of clean, dry gases up to 3.335 PSI (230 barg)
- Suitable for high pressure nitrogen
- Three stage, single acting piston design in a compact package
- All gas contact parts are in stainless steel
- Automatic high temperature stop
- Automatic stop by pressure
- Time Counter
- Oil-Less crankshaft mechanism
- Safety relief valve for each stage

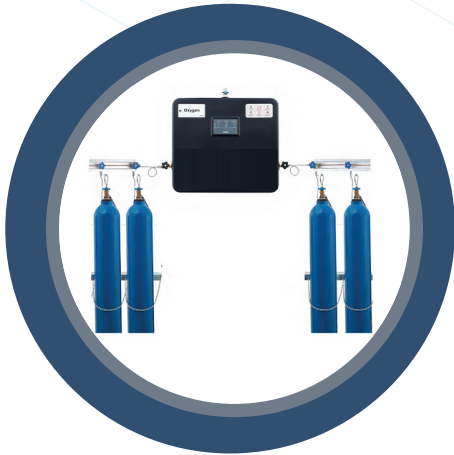
### KEY BENEFITS

- Oil-free
- High reliability
- Continuous operation
- Automatic start and stop
- Compact, lightweight and easy to maintain
- Long Life Cycle

## NITROGEN BOOSTER COMPRESSOR

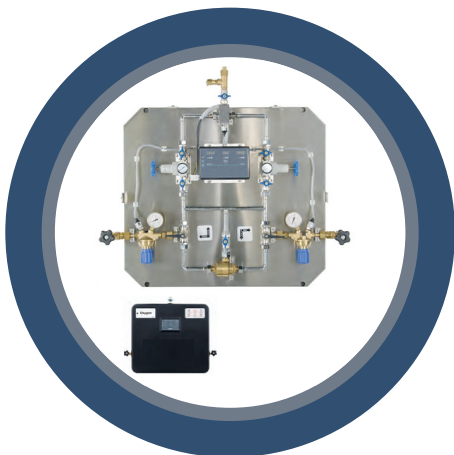
| MODEL | CAPACITY Nm <sup>3</sup> /h | INLET PRESSURE (bar) | OPERATING PRESSURE MAX. (bar) | STAGE | POWER (kW) | DIMENSIONS (cm) |
|-------|-----------------------------|----------------------|-------------------------------|-------|------------|-----------------|
| LNB   | 30                          | 4                    | 230                           | 4     | 11         | 120x100x125     |
| LNB   | 60                          | 4                    | 230                           | 4     | 15         | 120x100x125     |

## MEDICAL GAS EQUIPMENT



### **CENTRAL GAS STATION FOR O<sub>2</sub>, N<sub>2</sub>O AND CO<sub>2</sub>**

Central gas stations are designed to supply continuous medical gases like Oxygen, Nitrous Oxide, entonox, medical air, carbon dioxide and nitrogen from the cylinders to hospital pipeline. Each station controls one primary and one back up cylinder racks.



### **EMERGENCY RESERVE MANIFOLDS**

The automatic Changeover Manifold is designed to provide a continuous supply of Oxygen, Nitrous Oxide, and Carbon Dioxide in healthcare facilities. The manifold consists of two banks of cylinders located on each side of the pressure control assembly.



### **CENTRAL VACUUM STATION**

PLC controlled full automatic system  
Compact and modular design  
Medical type high efficiency bacteria filters  
Lubricated rotary vane vacuum pumps  
Sliding shelves enable easy access for maintenance



## MEDICAL GAS EQUIPMENT



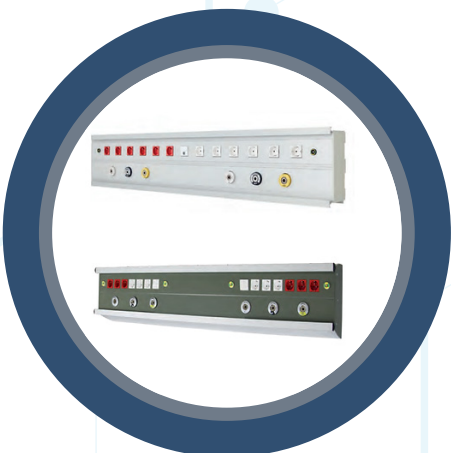
### **TANK MOUNTED – CENTRAL VACUUM STATION**

PLC controlled full automatic system

Compact tank top design

Suitable for low height medical gas plant rooms

Specifically designed for ease of installation



### **ICU TYPE PATIENT BED HEAD UNIT**

Patient Bed Head Units are designed to provide integrated solutions of medical gas outlets, nurse call systems and electrical outlets in patient areas, especially in ICU's. standard.

## DESICCANT AIR DRYER



- Microprocessor controlled
- All models have two-stage filtration at the inlet, 1 micron and 0.01 micron oil trap, and a 0.01 micron particle trap filter at the outlet.
- Power requirement max 50 Watt. 220 VAC 50-60 Hz
- Regeneration air requirement 15% @ dew point -40 oC at 100% capacity
- Dew temperature: -40 °C @ 100% capacity
- Ability to choose 4 programs according to operating conditions (120%, 100%, 75%, 50% Capacity)
- Manometer in both tubes

Please contact our company for different working pressure, capacity and dew degree.





## CONTACT



**Phone: +90 546 402 87 97**



**Email: [info@linairtech.com](mailto:info@linairtech.com)**



**Address: 06105, Ankara,  
Türkiye - Bagdat Street No  
93/92**

